

# Duce Dropper™ by SKI2 LLC

A hands-free transducer lift system to enhance your ice fishing experience. A unique and simple device to accessorize your locator that allows convenient removal of your transducer from the water with a simple tap of a foot pedal so you can focus on reeling in the fish!

## Contents:

- 1 Duce Dropper
- 1 32 oz plastic jar with lid
- 1 hardware bag (inside jar) that includes:
  - 1 upper wire manager/pivot fitting
  - 1 clevis pin
  - 1 clevis pin retainer pin
  - 6 nylon locknuts
  - 4 feet
  - 2 3/8 in hex bolts
  - 4 3/4 in hex bolts
  - 2 black nylon washers
  - 1 split ring

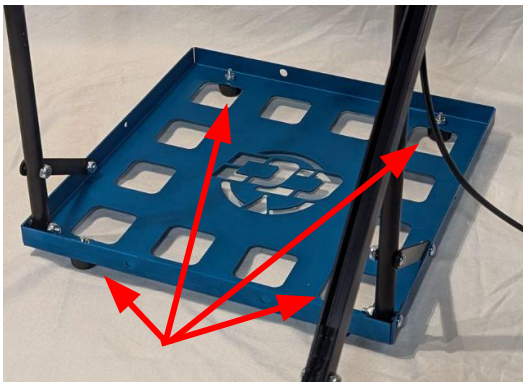


## Recommended Tools (not included):

- Scissors
- 1/8 in hex wrench
- 3/8 in socket wrench OR wrench equivalent

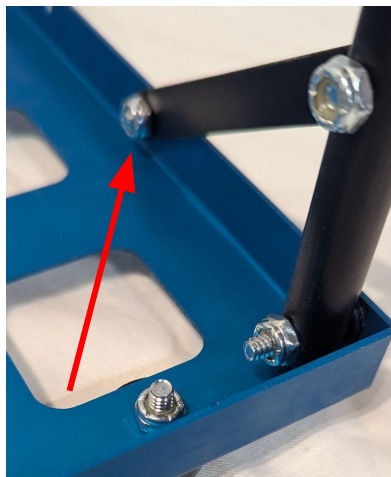
## Assembly Steps:

1.



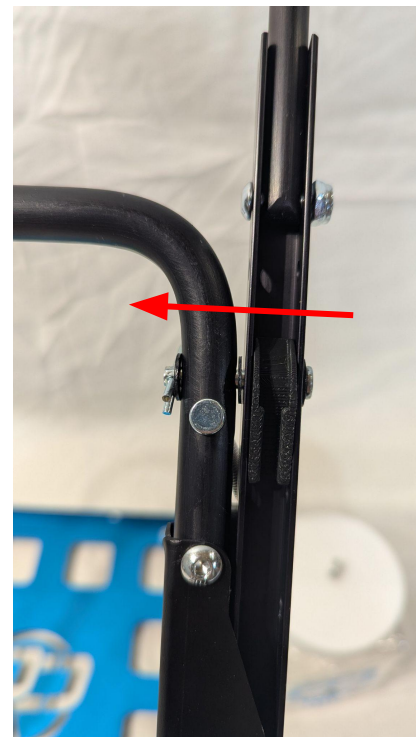
Using 3/4" hex bolts, feet and nylon nuts (x4), push bolts through recessed hole in feet and install in drilled holes in base and tighten.

2.



Rotate handle up and align brace with side hole. Using 3/8" hex bolts and nylon nuts (x2), install on both sides and tighten.

3.



Unfold arm to full extension and align black molded piece with third hole in arm channel as shown. Insert pin in direction of arrow. Make sure nylon washers are on both sides of handle and insert retainer clip on end of pin.

4.

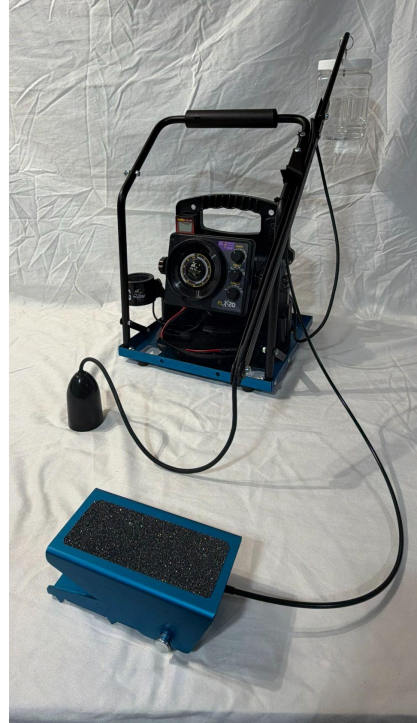


Install split ring on end of lift arm.

\*Now check to make sure all nuts are snug.  
DO NOT overtighten\*

## Set Up and Operation:

1. Place your locator, with screen facing forward, on the base of the Duce Dropper.
2. Hold transducer cable to desired length and gently press cable in to plastic holder on front end of lift arm. From there, route cable up channel, underneath trigger arm and press cable in to plastic holder at pivot point. Organize excess cable near locator. Cable length will vary depending on ice thickness or personal transducer depth preference.
3. Fill the plastic jar with liquid (counterweight) to predetermined fill line\* and attach to ring on back of the lift arm.
4. When a fish is caught, step on the pedal and the lift arm is released to raise your transducer out of the water for you.
5. Reel in fish!
6. To reset, simply push the front end of the arm down and the trigger arm will snap in to place. The Duce is Dropped. Resume fishing.



Armed position



Triggered position

\*- See Recommendations on next page

## Recommendations:

Because transducer weights vary among brands, it is advised to follow these steps at home to determine the specific counterweight for your particular locator. This can be done on a table or kitchen counter before heading out on the ice.

1. Place locator on base of Duce Dropper and set up as described on previous page. Set the whole unit on edge of table or counter in the ready position so transducer can freely hang.
2. To start out, fill jar about  $\frac{1}{3}$  full with water and attach to the ring at the back of the lift arm.
3. Push down on the pedal to trigger the lift arm release and note the rate at which the arm rises up. If rate is too fast (aggressive transducer movement), decrease counterweight by emptying some water from jar. If rate is too slow (barely moves up), counterweight must be increased by adding more water to the jar. This is very much a trial and error process depending on your transducer weight and may need to be repeated several times to achieve a nice smooth lift arm/transducer upward movement (see-saw motion) where the jar comes to rest gently at the base and the transducer is about even with the base.
4. If a smooth rate is hard to obtain and the jar is completely full of water, the transducer is too heavy and it is necessary to change the pivot position on the lift arm. Remove the clevis pin and move it left to the next hole (closer to front of arm). Repeat step 3. This may have to be done several times or pivot needs to be moved further forward.
5. When a nice smooth transducer upward motion is achieved, remove the jar from the ring, set it on a flat surface and use a permanent marker to mark the outside of the jar where the water line is. Empty the water from the jar.
6. Now you are all set! Your counterweight jar is specific to your locator and when on the ice, it can always be filled to that mark with lake water.

Other Tips:

- For added stability and security, use the four pre-drilled fastener holes on base to tie down the locator. Use cord, rope or laces.
- When transporting the unit, place the transducer on the base so it is not freely hanging and hang pedal on bolt stem on right side of handle.

## Questions or Comments?

Email us at [info@ducedropper.com](mailto:info@ducedropper.com). Visit [www.ducedropper.com](http://www.ducedropper.com) for more information. Follow us on Facebook @Duce Dropper and Instagram @duce\_dropper.

